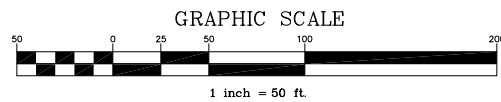


- LEGEND**
- ⊙ FOUND ALUMINUM CAP
 - FOUND IRON PIPE
 - ⊕ FOUND MONUMENT
 - FOUND REBAR
 - ▲ SET MAG NAIL
 - ① BLOCK NUMBER
 - Ⓢ PARCEL NUMBER
 - ⑩ CONTROL POINT NUMBER
 - (02-051) PLAT NUMBER
 - 2 LOT NUMBER
 - SI STREET INTERSECTION
 - PC POINT OF CURVATURE
 - PT POINT OF CURVATURE
 - PRC POINT OF REVERSE CURVE

FOUND PROJECT CONTROL SHOWN THIS SHEET					
POINT NO.	NORTHING	EASTING	DESCRIPTION	STATION	OFFSET
256	331,219.88'	344,766.56'	ALUMINUM CAP ON REBAR	36+92.90	0.29 LT
755	331,236.11'	344,731.76'	REBAR WITH CAP	37+09.21	35.05 LT
754	331,236.49'	344,796.85'	REBAR WITH CAP	37+09.44	30.04 RT
905	331,310.92'	344,797.57'	IRON PIPE	37+83.87	30.93 RT
906	331,377.49'	344,796.72'	REBAR	38+50.44	30.24 RT
757	331,387.65'	344,806.77'	ALUMINUM CAP ON REBAR	38+60.58	40.32 RT
756	331,392.52'	344,731.54'	REBAR WITH CAP	38+65.62	34.91 LT
758	331,421.17'	344,731.44'	REBAR WITH CAP	38+94.27	34.94 LT
908	331,567.33'	344,736.32'	REBAR	40+40.42	29.72 LT
907	331,637.07'	344,895.70'	BRASS CAP MONUMENT	41+09.80	129.81 RT
765	331,732.79'	345,094.65'	REBAR WITH CAP	42+05.05	328.98 RT
251	331,735.13'	344,765.66'	BRASS CAP MONUMENT	42+08.15	0.00 RT
773	331,751.44'	344,595.54'	IRON PIPE	42+24.85	170.08 LT
250	332,226.97'	344,764.52'	BRASS CAP MONUMENT	46+99.99	0.00 RT
821	332,261.30'	344,723.15'	REBAR WITH CAP	47+34.38	41.32 LT
834	332,262.02'	344,829.37'	ALUMINUM MONUMENT	47+34.95	64.91 RT
833	332,262.35'	345,004.40'	ALUMINUM MONUMENT	47+35.04	239.93 RT
909	332,292.08'	344,799.40'	ALUMINUM CAP ON REBAR	47+65.05	34.98 RT



HORIZONTAL CONTROL STATEMENT

COORDINATE SYSTEM: THIS PROJECT IS LOCATED ENTIRELY WITHIN THE ANCHORAGE BOWL 2000 ADJUSTMENT, A LOCAL SURFACE GRID COORDINATE SYSTEM DEVELOPED BY THE ALASKA DEPARTMENT OF TRANSPORTATION.

BASIS OF COORDINATES: THE BASIS OF COORDINATES IS NGS STATION O'MALLEY, LOCATED NEAR THE INTERSECTION OF THE NEW SEWARD HIGHWAY AND O'MALLEY ROAD. SAID STATION HAS ANCHORAGE BOWL 2000 COORDINATES OF 303939.2310 N, 353362.5446 E.

BASIS OF BEARINGS: THE BASIS OF BEARINGS IS A LOCAL PLANE BEARING BETWEEN NGS STATION O'MALLEY AND NGS STATION LOOP 2 USE RM 3 1964. NGS STATION LOOP 2 USE RM 3 1964 BEARS N 01°43'26.4"E A DISTANCE OF 49488.45 FEET FROM NGS STATION O'MALLEY. NGS STATION LOOP 2 USE RM 3 1964 HAS ANCHORAGE BOWL 2000 COORDINATES OF 353405.2778 N, 354851.3982 E.

TRANSLATION PARAMETERS: TO CONVERT THE LOCAL COORDINATES TO NAD83 (92) STATE PLANE COORDINATES, TRANSLATE USING +2296868.6878 N, +1312517.4905 E, AND SCALE USING 0.9998910192.

SET PROJECT CONTROL SHOWN THIS SHEET					
POINT NO.	NORTHING	EASTING	DESCRIPTION	STATION	OFFSET
402	331,384.88'	344,801.00'	SET MAG NAIL	38+57.82	34.54 RT
403	331,666.82'	344,726.70'	SET MAG NAIL	41+39.93	39.11 LT
404	332,185.73'	344,733.02'	SET MAG NAIL	46+58.82	31.59 LT
410	332,332.11'	344,692.23'	SET MAG NAIL	48+05.23	72.14 LT

- SURVEY NOTES**
- LOUNSBURY AND ASSOCIATES, INC. PERFORMED FIELD SURVEY NOVEMBER 2015 - JANUARY 2016.
 - THE MONUMENTATION DEFINING THE CENTERLINE OF RIGHT-OF-WAY IS NOT COINCIDENT WITH THE CONSTRUCTION CENTERLINES SHOWN HEREON. REFER TO THE COORDINATE TABLE FOR VALUES OF THE CENTERLINE OF RIGHT-OF-WAY MONUMENTS.
 - STATIONING VALUES SHOWN ARE FOR CONSTRUCTION CENTERLINE.
 - WHETHER LISTED OR NOT, ALL MONUMENTS OR PROPERTY MARKERS, CORNERS, OR ACCESSORIES, WHICH WILL BE DISTURBED OR BURIED, SHALL BE REFERENCED OR RE-ESTABLISHED IN THEIR ORIGINAL POSITION (A.S. 19.10.260) AND RECORDED (A.S. 34.65.040).
 - REFER TO MUNICIPALITY OF ANCHORAGE STANDARD SPECIFICATION (MASS) FOR ADDITIONAL REQUIREMENTS. REQUIREMENTS FOR SURVEYING AND PRESERVATION OF MONUMENTATION EXISTS THROUGHOUT THE MASS. RELEVANT SECTIONS INCLUDE, BUT ARE NOT LIMITED TO: SECTION 10.04 ARTICLE 4.7 REFERENCE STAKES AND SURVEYING CONSTRUCTION SURVEYING SECTION 65.02
- VERTICAL CONTROL STATEMENT**
- DATUM IS MUNICIPALITY OF ANCHORAGE 1972 NGS ADJUSTMENT. BENCHMARKS ARE:
- "GAAB 103," A 2-1/2" BRASS CAP SET HORIZONTALLY, 0.2' EAST OF BOTTOM STEP, EASTERMOST STEPS OF ENSTAR NAT. GAS ENTRANCE; ELEVATION = 96.60 FEET.
- "CB TL3A," A 2-1/2" BRASS CAP SET VERTICALLY, 1.0' EAST OF SW CORNER OF EASTERLY S WING OF NORTHERN LIGHTS SHOPPING CENTER; ELEVATION = 96.09 FEET.

FIELD BOOKS	BM NO.	LOCATION	ELEV.	DATA	DRAWN BY	CHECKED BY	DATA	DRAWN BY	CHECKED BY	REV	DATE	DESCRIPTION	BY	REV	DATE	DESCRIPTION	BY
DESIGN:				BASE			TELEPHONE										
STAKING:				TOPOGRAPHY			ELECTRIC										
ASBUILT:				PROFILE			CABLE TV										
				SANITARY SEWER			DESIGN										
				STORM SEWER			QUANTITIES										
				WATER			MUN. FINAL CHECK										
				GAS													
CONTRACTOR:	BASIS OF DATUM: 1972 N.G.S. DATUM																
INSPECTOR:																	
CONSTRUCTION RECORD	VERTICAL DATUM			PLAN CHECK				REVISIONS				CONSULTANT		SEAL			

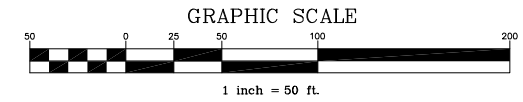
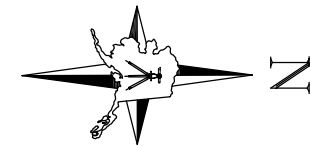


65%



PROJECT MANAGEMENT AND ENGINEERING DEPARTMENT			
PM&E PROJECT NO. 03-22			
SPENARD ROAD RECONSTRUCTION BENSON BOULEVARD TO HILLCREST DRIVE			
SURVEY CONTROL SHEET			
STA 36+12.54 TO 49+50.00			
SCALE: H: 1" = 50'	DATE: AUG. 2016	GRIDS: 1529/1629	SHEET SC1 of SC3
	ACCT. NO. 05-0376		

SHEET 2 - STA 49+50.00



LEGEND

- ⊙ FOUND ALUMINUM CAP
- FOUND IRON PIPE
- ⊕ FOUND MONUMENT
- FOUND REBAR
- ▲ SET MAG NAIL
- ① BLOCK NUMBER
- ⊗ PARCEL NUMBER
- ⑩ CONTROL POINT NUMBER
- (02-051) PLAT NUMBER
- 2 LOT NUMBER
- SI STREET INTERSECTION
- PC POINT OF CURVATURE
- PT POINT OF CURVATURE
- PRC POINT OF REVERSE CURVE

CURVE TABLE

CURVE NO.	RADIUS	LENGTH	DELTA	TANGENT	CHORD	BEARING
C1	150.00'	65.73'	25°06'27"	33.402'	65.21'	S77°31'54"E
C2	150.00'	65.69'	25°05'28"	33.379'	65.16'	S77°31'24"E
C3	643.00'	513.62'	45°46'02"	271.397'	500.07'	S22°57'25"E
C4	643.00'	153.59'	13°41'09"	77.161'	153.22'	S6°54'59"E

SET PROJECT CONTROL SHOWN THIS SHEET

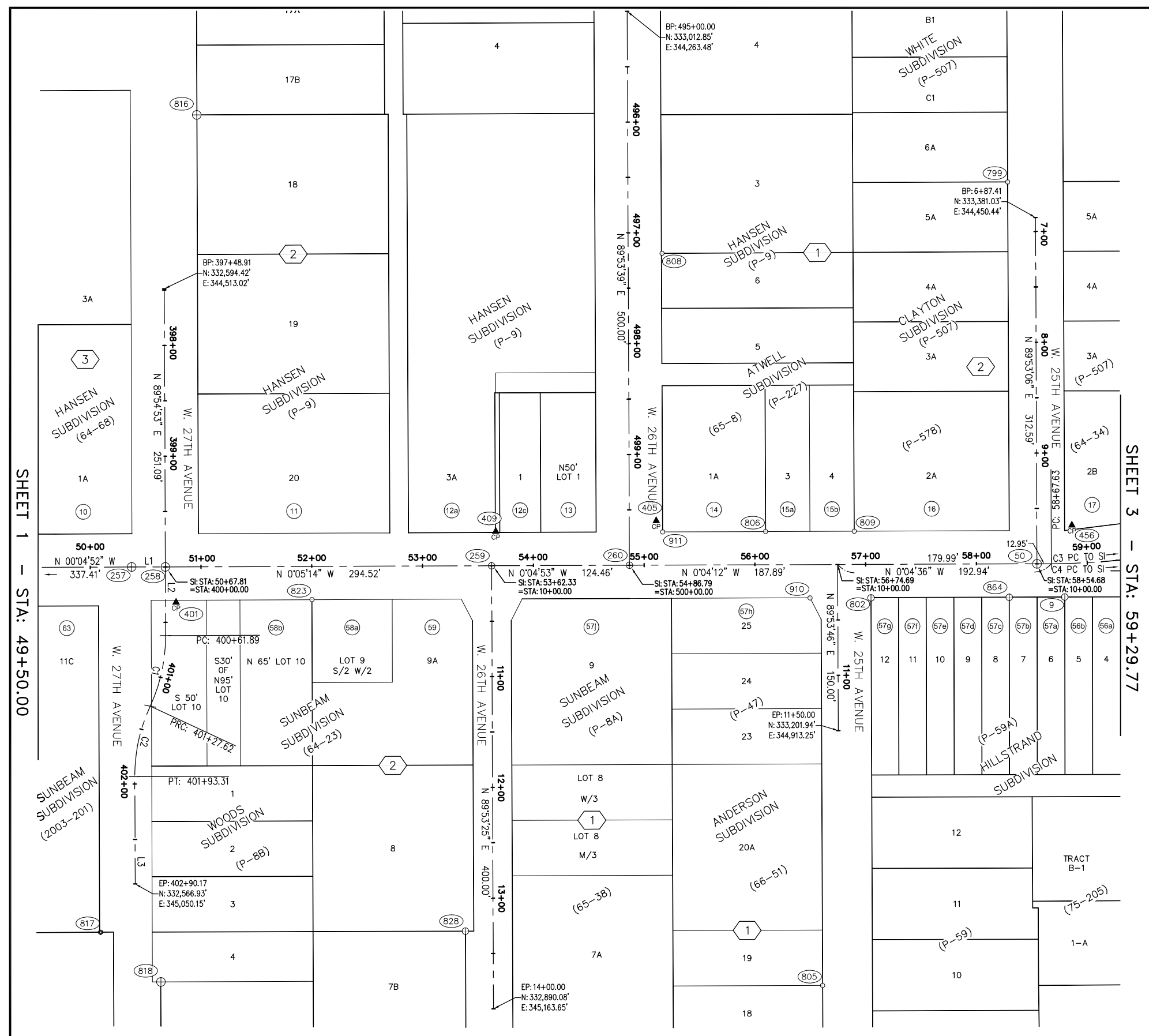
POINT NO.	NORTHING	EASTING	DESCRIPTION	STATION	OFFSET
401	332,604.43'	344,796.07'	SET MAG NAIL	50+77.40	31.98 RT
409	332,893.13'	344,732.71'	SET MAG NAIL	53+66.20	30.94 LT
405	333,038.02'	344,723.44'	SET MAG NAIL	55+11.09	40.01 LT
456	333,413.23'	344,728.23'	SET MAG NAIL	58+87.36	34.45 LT

FOUND PROJECT CONTROL SHOWN THIS SHEET

POINT NO.	NORTHING	EASTING	DESCRIPTION	STATION	OFFSET
817	332,535.57'	345,093.65'	IRON PIPE	50+08.12	329.57 RT
257	332,564.38'	344,764.04'	BRASS CAP MONUMENT	50+37.40	0.00 RT
818	332,589.94'	345,138.58'	BRASS CAP MONUMENT	50+63.73	374.49 RT
258	332,594.79'	344,764.10'	BRASS CAP MONUMENT	50+67.81	0.00 RT
816	332,624.07'	344,356.07'	BRASS CAP MONUMENT	50+97.72	407.99 LT
823	332,727.08'	344,793.85'	REBAR WITH CAP	52+00.05	29.94 RT
828	332,864.92'	345,093.42'	ALUMINUM CAP ON REBAR	53+37.44	329.73 RT
259	332,889.31'	344,763.65'	ALUMINUM CAP ON REBAR	53+62.33	0.00 RT
260	333,013.77'	344,763.48'	ALUMINUM CAP ON REBAR	54+86.79	0.00 RT
911	333,043.80'	344,733.48'	REBAR WITH CAP	55+16.86	29.97 LT
808	333,043.83'	344,481.94'	REBAR WITH CAP	55+17.19	281.50 LT
806	333,136.75'	344,733.32'	REBAR WITH CAP	56+09.80	30.00 LT
910	333,176.72'	344,793.32'	REBAR	56+49.70	30.04 RT
805	333,187.24'	345,143.23'	REBAR WITH CAP	56+59.79	379.96 RT
809	333,216.77'	344,733.24'	REBAR WITH CAP	56+89.84	29.99 LT
802	333,231.73'	344,793.45'	ALUMINUM CAP ON REBAR	57+04.71	30.24 RT
799	333,355.96'	344,418.26'	REBAR WITH CAP	58+29.44	344.78 LT
864	333,356.52'	344,793.18'	ALUMINUM CAP ON REBAR	58+29.50	30.14 RT
50	333,381.66'	344,763.03'	ALUMINUM MONUMENT	58+54.68	0.02 RT
9	333,406.63'	344,793.03'	ALUMINUM CAP ON REBAR	58+79.07	30.17 RT
903	333,546.56'	344,701.49'	ALUMINUM CAP ON REBAR	60+32.01	41.77 LT

LINE TABLE

LINE NO.	Length	DIRECTION
L2	61.89'	N 89°54'53" E
L3	96.86'	N 89°52'52" E



SHEET 1 - STA: 49+50.00

SHEET 3 - STA: 59+29.77

FIELD BOOKS	BM NO.	LOCATION	ELEV.	DATA	DRAWN BY	CHECKED BY	DATA	DRAWN BY	CHECKED BY	REV	DATE	DESCRIPTION	BY	REV	DATE	DESCRIPTION	BY
DESIGN: -	-	-	-	BASE	-	-	TELEPHONE	-	-	-	-	-	-	-	-	-	-
STAKING: -	-	-	-	TOPOGRAPHY	-	-	ELECTRIC	-	-	-	-	-	-	-	-	-	-
ASBUILT: -	-	-	-	PROFILE	-	-	CABLE TV	-	-	-	-	-	-	-	-	-	-
CONTRACTOR: -	-	-	-	SANITARY SEWER	-	-	DESIGN	-	-	-	-	-	-	-	-	-	-
INSPECTOR: -	-	-	-	STORM SEWER	-	-	QUANTITIES	-	-	-	-	-	-	-	-	-	-
				WATER	-	-	MUN. FINAL CHECK	-	-	-	-	-	-	-	-	-	-
				GAS	-	-		-	-	-	-	-	-	-	-	-	-

LOUISBURY & ASSOCIATES
 Surveyors • Engineers • Planners
 5300 A STREET ANCHORAGE, ALASKA 99518
 (907) 772-5461
 CERTIFICATE OF AUTHORIZATION NO. AEC0391

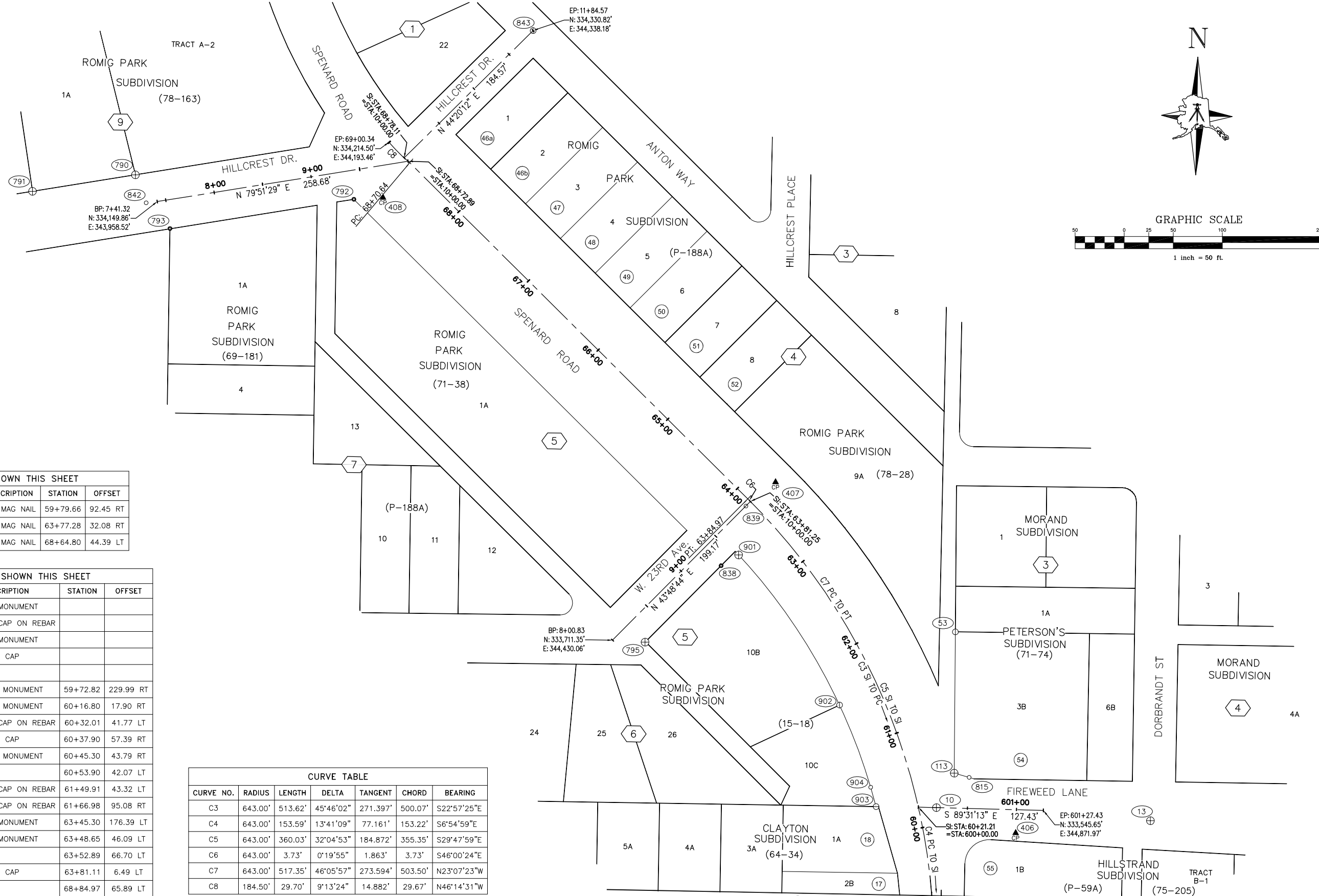
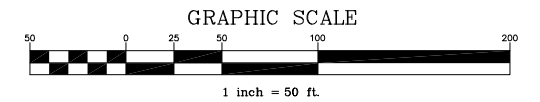
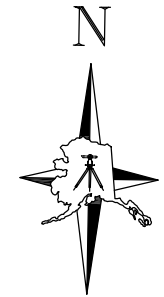
65%



PROJECT MANAGEMENT AND ENGINEERING DEPARTMENT
 PM&E PROJECT NO. 03-22
 SPENARD ROAD RECONSTRUCTION
 BENSON BOULEVARD TO HILLCREST DRIVE
SURVEY CONTROL SHEET
 STA 49+50.00 TO 59+29.77
 SCALE: H: 1" = 50' DATE: AUG. 2016 GRIDS: 1529/1629 SHEET SC2 of SC3
 ACCT. NO. 05-0376

LEGEND

- ⊙ FOUND ALUMINUM CAP
- FOUND IRON PIPE
- ⊕ FOUND MONUMENT
- FOUND REBAR
- ▲ SET MAG NAIL
- ① BLOCK NUMBER
- Ⓢ PARCEL NUMBER
- ⑩ CONTROL POINT NUMBER
- (02-051) PLAT NUMBER
- 2 LOT NUMBER
- SI STREET INTERSECTION
- PC POINT OF CURVATURE
- PT POINT OF CURVATURE
- PRC POINT OF REVERSE CURVE



SET PROJECT CONTROL SHOWN THIS SHEET

POINT NO.	NORTHING	EASTING	DESCRIPTION	STATION	OFFSET
406	333,522.20'	344,844.14'	SET MAG NAIL	59+79.66	92.45 RT
407	333,875.18'	344,593.27'	SET MAG NAIL	63+77.28	32.08 RT
408	334,157.91'	344,188.36'	SET MAG NAIL	68+64.80	44.39 LT



FOUND PROJECT CONTROL SHOWN THIS SHEET

POINT NO.	NORTHING	EASTING	DESCRIPTION	STATION	OFFSET
791	334,158.08'	343,831.21'	ALUMINUM MONUMENT		
843	334,330.82'	344,338.18'	ALUMINUM CAP ON REBAR		
790	334,176.63'	343,935.71'	ALUMINUM MONUMENT		
842	334,148.37'	343,947.18'	REBAR WITH CAP		
793	334,122.58'	343,971.91'	IRON PIPE		
13	333,537.06'	344,981.15'	BRASS CAP MONUMENT	59+72.82	229.99 RT
10	333,546.56'	344,762.99'	BRASS CAP MONUMENT	60+16.80	17.90 RT
903	333,546.56'	344,701.49'	ALUMINUM CAP ON REBAR	60+32.01	41.77 LT
815	333,577.96'	344,795.73'	REBAR WITH CAP	60+37.90	57.39 RT
113	333,581.99'	344,780.49'	BRASS CAP MONUMENT	60+45.30	43.79 RT
904	333,566.18'	344,695.66'	REBAR	60+53.90	42.07 LT
902	333,649.37'	344,662.47'	ALUMINUM CAP ON REBAR	61+49.91	43.32 LT
53	333,725.97'	344,779.10'	ALUMINUM CAP ON REBAR	61+66.98	95.08 RT
795	333,709.84'	344,463.25'	ALUMINUM MONUMENT	63+45.30	176.39 LT
901	333,800.38'	344,557.00'	ALUMINUM MONUMENT	63+48.65	46.09 LT
838	333,789.12'	344,539.31'	IRON PIPE	63+52.89	66.70 LT
839	333,850.32'	344,563.52'	REBAR WITH CAP	63+81.11	6.49 LT
792	334,155.73'	344,158.70'	IRON PIPE	68+84.97	65.89 LT

CURVE TABLE

CURVE NO.	RADIUS	LENGTH	DELTA	TANGENT	CHORD	BEARING
C3	643.00'	513.62'	45°46'02"	271.397'	500.07'	S22°57'25"E
C4	643.00'	153.59'	13°41'09"	77.161'	153.22'	S6°54'59"E
C5	643.00'	360.03'	32°04'53"	184.872'	355.35'	S29°47'59"E
C6	643.00'	3.73'	0°19'55"	1.863'	3.73'	S46°00'24"E
C7	643.00'	517.35'	46°05'57"	273.594'	503.50'	N23°07'23"W
C8	184.50'	29.70'	9°13'24"	14.882'	29.67'	N46°14'31"W

SHEET 3 - STA: 59+29.77

<p>DESIGN: --</p> <p>STAKING: --</p> <p>ASBUILT: --</p> <p>CONTRACTOR: --</p> <p>INSPECTOR: --</p>	<p>BM NO. --</p> <p>LOCATION --</p> <p>ELEV. --</p> <p>DATA --</p> <p>BASE --</p> <p>TOPOGRAPHY --</p> <p>PROFILE --</p> <p>SANITARY SEWER --</p> <p>STORM SEWER --</p> <p>WATER --</p> <p>GAS --</p>	<p>DRAWN BY --</p> <p>CHECKED BY --</p> <p>DATA --</p> <p>TELEPHONE --</p> <p>ELECTRIC --</p> <p>CABLE TV --</p> <p>DESIGN --</p> <p>QUANTITIES --</p> <p>MUN. FINAL CHECK --</p>	<p>REV. DATE --</p> <p>DESCRIPTION --</p> <p>BY --</p> <p>REV. DATE --</p> <p>DESCRIPTION --</p> <p>BY --</p>	<p>CONSTRUCTION RECORD</p> <p>VERTICAL DATUM</p> <p>PLAN CHECK</p> <p>REVISIONS</p> <p>CONSULTANT</p>	 <p>65%</p> <p>SEAL</p>		<p style="text-align: center;">PROJECT MANAGEMENT AND ENGINEERING DEPARTMENT</p> <p style="text-align: center;">PM&E PROJECT NO. 03-22</p> <p style="text-align: center;">SPENARD ROAD RECONSTRUCTION BENSON BOULEVARD TO HILLCREST DRIVE</p> <p style="text-align: center;">SURVEY CONTROL SHEET</p> <p style="text-align: center;">STA 59+29.77 TO 69+00.34</p> <p>SCALE: H: 1" = 50'</p> <p>DATE: AUG. 2016 GRIDS: 1529/1629 SHEET SC3 of SC3</p>
--	---	---	---	---	---	---	--