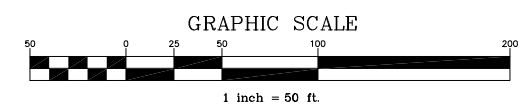


SHEET 2 - STA 49+50.00

- LEGEND**
- ⊙ FOUND ALUMINUM CAP
  - FOUND IRON PIPE
  - ⊕ FOUND MONUMENT
  - FOUND REBAR
  - ⚓ SET MAG NAIL
  - ① BLOCK NUMBER
  - ⑧ PARCEL NUMBER
  - ⑩ CONTROL POINT NUMBER
  - (02-051) PLAT NUMBER
  - 2 LOT NUMBER
  - SI STREET INTERSECTION
  - PC POINT OF CURVATURE
  - PT POINT OF CURVATURE
  - PRC POINT OF REVERSE CURVE

**FOUND PROJECT CONTROL SHOWN THIS SHEET**

POINT NO.	NORTHING	EASTING	DESCRIPTION	STATION	OFFSET
256	331,219.88'	344,766.56'	ALUMINUM CAP ON REBAR	36+92.90	0.29L
755	331,236.11'	344,731.76'	REBAR WITH CAP	37+09.21	35.05L
754	331,236.49'	344,796.85'	REBAR WITH CAP	37+09.44	30.04R
905	331,310.92'	344,797.57'	IRON PIPE	37+83.87	30.93R
906	331,377.49'	344,796.72'	REBAR	38+50.44	30.24R
757	331,387.65'	344,806.77'	ALUMINUM CAP ON REBAR	38+60.58	40.32R
756	331,392.52'	344,731.54'	REBAR WITH CAP	38+65.62	34.91L
758	331,421.17'	344,731.44'	REBAR WITH CAP	38+94.27	34.94L
908	331,567.33'	344,736.32'	REBAR	40+40.42	29.72L
907	331,637.07'	344,895.70'	BRASS CAP MONUMENT	41+09.80	129.81R
765	331,732.79'	345,094.65'	REBAR WITH CAP	42+05.05	328.98R
251	331,735.13'	344,765.66'	BRASS CAP MONUMENT	42+08.15	0.00R
773	331,751.44'	344,595.54'	IRON PIPE	42+24.85	170.08L
250	332,226.97'	344,764.52'	BRASS CAP MONUMENT	46+99.99	0.00R
821	332,261.30'	344,723.15'	REBAR WITH CAP	47+34.38	41.32L
834	332,262.02'	344,829.37'	ALUMINUM MONUMENT	47+34.95	64.91R
833	332,262.35'	345,004.40'	ALUMINUM MONUMENT	47+35.04	239.93R
909	332,292.08'	344,799.40'	ALUMINUM CAP ON REBAR	47+65.05	34.98R



**HORIZONTAL CONTROL STATEMENT**

**COORDINATE SYSTEM:**  
THIS PROJECT IS LOCATED ENTIRELY WITHIN THE ANCHORAGE BOWL 2000 ADJUSTMENT, A LOCAL SURFACE GRID COORDINATE SYSTEM DEVELOPED BY THE ALASKA DEPARTMENT OF TRANSPORTATION.

**BASIS OF COORDINATES:** THE BASIS OF COORDINATES IS NGS STATION O'MALLEY, LOCATED NEAR THE INTERSECTION OF THE NEW SEWARD HIGHWAY AND O'MALLEY ROAD. SAID STATION HAS ANCHORAGE BOWL 2000 COORDINATES OF 303939.2310 N, 353362.5446 E.

**BASIS OF BEARINGS:** THE BASIS OF BEARINGS IS A LOCAL PLANE BEARING BETWEEN NGS STATION O'MALLEY AND NGS STATION LOOP 2 USE RM 3 1964. NGS STATION LOOP 2 USE RM 3 1964 BEARS N 01°43'26.4"E A DISTANCE OF 49488.45 FEET FROM NGS STATION O'MALLEY. NGS STATION LOOP 2 USE RM 3 1964 HAS ANCHORAGE BOWL 2000 COORDINATES OF 353405.2778 N, 354851.3982 E.

**TRANSLATION PARAMETERS:** TO CONVERT THE LOCAL COORDINATES TO NAD83 (92) STATE PLANE COORDINATES, TRANSLATE USING +2296868.6878 N, +1312517.4905 E, AND SCALE USING 0.9998910192.

**SET PROJECT CONTROL SHOWN THIS SHEET**

POINT NO.	NORTHING	EASTING	DESCRIPTION	STATION	OFFSET
402	331,384.88'	344,801.00'	SET MAG NAIL	38+57.82	34.54R
403	331,666.82'	344,726.70'	SET MAG NAIL	41+39.93	39.11L
404	332,185.73'	344,733.02'	SET MAG NAIL	46+58.82	31.59L
410	332,332.11'	344,692.23'	SET MAG NAIL	48+05.23	72.14L

**SURVEY NOTES**

- LOUNSBURY AND ASSOCIATES, INC. PERFORMED FIELD SURVEY NOVEMBER 2015 - JANUARY 2016.
- THE MONUMENTATION DEFINING THE CENTERLINE OF RIGHT-OF-WAY IS NOT COINCIDENT WITH THE CONSTRUCTION CENTERLINES SHOWN HEREON.  
REFER TO THE COORDINATE TABLE FOR VALUES OF THE CENTERLINE OF RIGHT-OF-WAY MONUMENTS.
- STATIONING VALUES SHOWN ARE FOR CONSTRUCTION CENTERLINE.

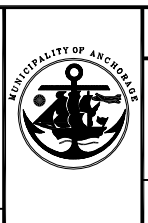
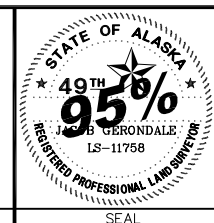
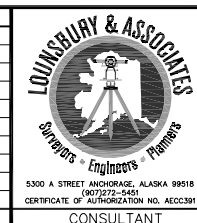
**VERTICAL CONTROL STATEMENT**

DATUM IS MUNICIPALITY OF ANCHORAGE 1972 NGS ADJUSTMENT. BENCHMARKS ARE:

"GAAB 103," A 2-1/2" BRASS CAP SET HORIZONTALLY, 0.2' EAST OF BOTTOM STEP, EASTERNMOST STEPS OF ENSTAR NAT. GAS ENTRANCE; ELEVATION = 96.60 FEET.

"CB TL3A," A 2-1/2" BRASS CAP SET VERTICALLY, 1.0' EAST OF SW CORNER OF EASTERLY S WING OF NORTHERN LIGHTS SHOPPING CENTER; ELEVATION = 96.09 FEET.

FIELD BOOKS	BM NO.	LOCATION	ELEV.	DATA	DRAWN BY	CHECKED BY	DATA	DRAWN BY	CHECKED BY	REV	DATE	DESCRIPTION	BY	REV	DATE	DESCRIPTION	BY	
DESIGN: MOA 3346, 3376-3379, 3406, 3690, 3691	GAAB 89	CENTER BOWL	93.40'	BASE	-	-	TELEPHONE	-	-	-	-	-	-	-	-	-	-	-
STAKING: -	GAAB 103	ENSTAR STAIRS	96.60'	TOPOGRAPHY	-	-	ELECTRIC	-	-	-	-	-	-	-	-	-	-	-
ASBUILT: -	CB TL-3A	REI BUILDING	96.09'	PROFILE	-	-	CABLE TV	-	-	-	-	-	-	-	-	-	-	-
CONTRACTOR: -				SANITARY SEWER	-	-	DESIGN	-	-	-	-	-	-	-	-	-	-	-
INSPECTOR: -				STORM SEWER	-	-	QUANTITIES	-	-	-	-	-	-	-	-	-	-	-
				WATER	-	-	MUN. FINAL CHECK	-	-	-	-	-	-	-	-	-	-	-
				GAS	-	-		-	-	-	-	-	-	-	-	-	-	-



**PROJECT MANAGEMENT AND ENGINEERING DEPARTMENT**

PM&E PROJECT NO. 03-22B

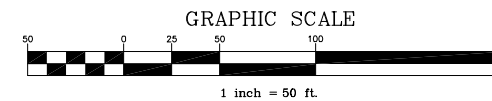
SPENARD ROAD RECONSTRUCTION  
BENSON BOULEVARD TO HILLCREST DRIVE

**SURVEY CONTROL SHEET**

STA 36+12.54 TO 49+50.00

SCALE: H: 1" = 50'    DATE: DEC. 2016    GRIDS: 1529/1629    SHEET SC1 of SC3

ACCT. NO. 05-037G



**LEGEND**

- ⊙ FOUND ALUMINUM CAP
- FOUND IRON PIPE
- ⊕ FOUND MONUMENT
- FOUND REBAR
- ▲ SET MAG NAIL
- ① BLOCK NUMBER
- ⊙ PARCEL NUMBER
- ⑩ CONTROL POINT NUMBER
- (02-051) PLAT NUMBER
- 2 LOT NUMBER
- SI STREET INTERSECTION
- PC POINT OF CURVATURE
- PT POINT OF CURVATURE
- PRC POINT OF REVERSE CURVE

**CURVE TABLE**

CURVE NO.	RADIUS	LENGTH	DELTA	TANGENT	CHORD	BEARING
C1	150.00'	65.73'	25°06'27"	33.40'	65.21'	S77°31'54"E
C2	150.00'	65.69'	25°05'28"	33.38'	65.16'	S77°31'24"E
C3	643.00'	513.62'	45°46'02"	271.40'	500.07'	S22°57'25"E
C4	643.00'	153.59'	13°41'09"	77.16'	153.22'	S6°54'59"E

**SET PROJECT CONTROL SHOWN THIS SHEET**

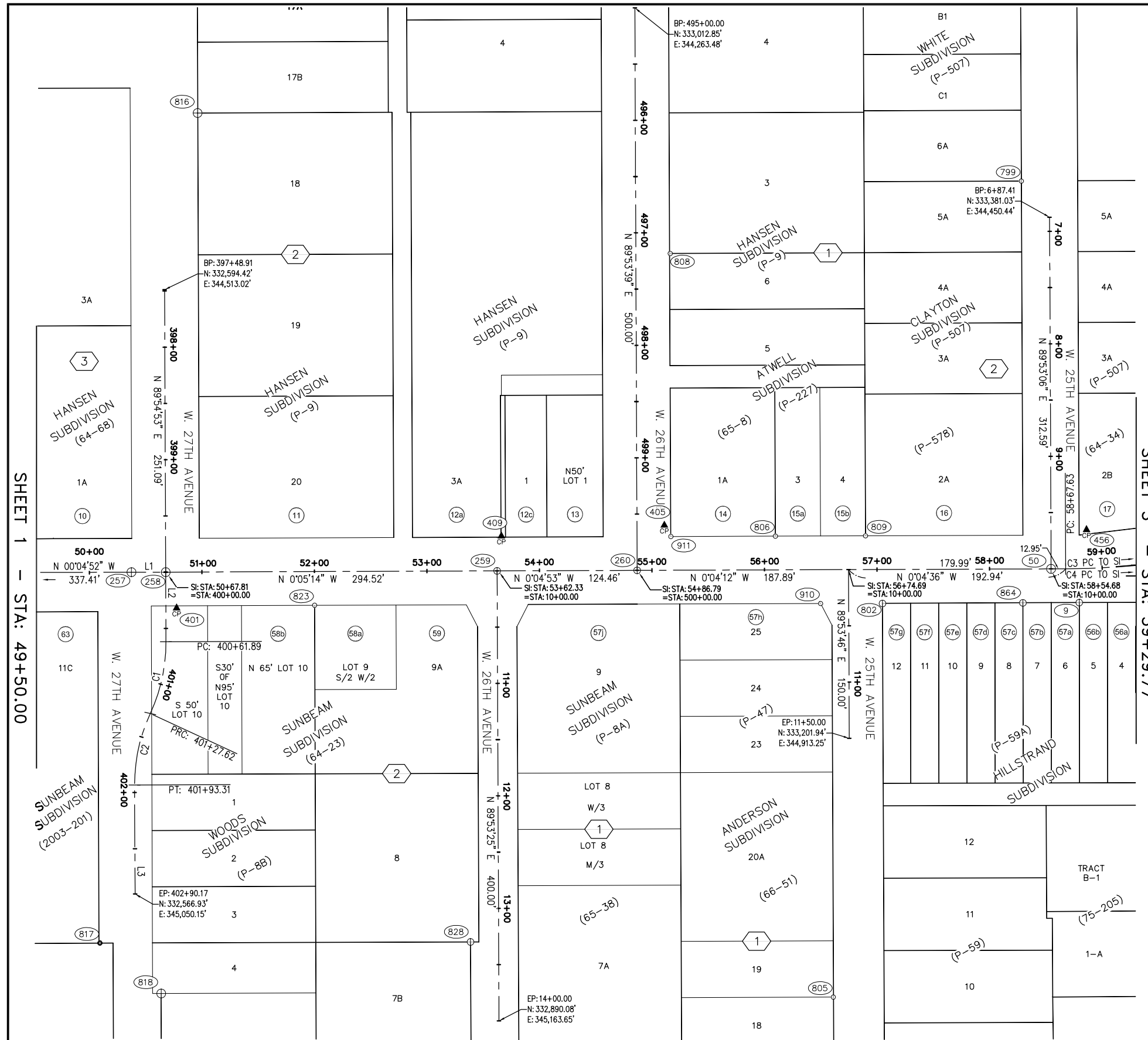
POINT NO.	NORTHING	EASTING	DESCRIPTION	STATION	OFFSET
401	332,604.43'	344,796.07'	SET MAG NAIL	50+77.40	31.98R
409	332,893.13'	344,732.71'	SET MAG NAIL	53+66.20	30.94L
405	333,038.02'	344,723.44'	SET MAG NAIL	55+11.09	40.01L
456	333,413.23'	344,728.23'	SET MAG NAIL	58+87.36	34.45L

**FOUND PROJECT CONTROL SHOWN THIS SHEET**

POINT NO.	NORTHING	EASTING	DESCRIPTION	STATION	OFFSET
817	332,535.57'	345,093.65'	IRON PIPE	50+08.12	329.57R
257	332,564.38'	344,764.04'	BRASS CAP MONUMENT	50+37.40	0.00R
818	332,589.94'	345,138.58'	BRASS CAP MONUMENT	50+63.73	374.49R
258	332,594.79'	344,764.10'	BRASS CAP MONUMENT	50+67.81	0.00R
816	332,624.07'	344,356.07'	BRASS CAP MONUMENT	50+97.72	407.99L
823	332,727.08'	344,793.85'	REBAR WITH CAP	52+00.05	29.94R
828	332,864.92'	345,093.42'	ALUMINUM CAP ON REBAR	53+37.44	329.73R
259	332,889.31'	344,763.65'	ALUMINUM CAP ON REBAR	53+62.33	0.00R
260	333,013.77'	344,763.48'	ALUMINUM CAP ON REBAR	54+86.79	0.00R
911	333,043.80'	344,733.48'	REBAR WITH CAP	55+16.86	29.97L
808	333,043.83'	344,481.94'	REBAR WITH CAP	55+17.19	281.50L
806	333,136.75'	344,733.32'	REBAR WITH CAP	56+09.80	30.00L
910	333,176.72'	344,793.32'	REBAR	56+49.70	30.04R
805	333,187.24'	345,143.23'	REBAR WITH CAP	56+59.79	379.96R
809	333,216.77'	344,733.24'	REBAR WITH CAP	56+89.84	29.99L
802	333,231.73'	344,793.45'	ALUMINUM CAP ON REBAR	57+04.71	30.24R
799	333,355.96'	344,418.26'	REBAR WITH CAP	58+29.44	344.78L
864	333,356.52'	344,793.18'	ALUMINUM CAP ON REBAR	58+29.50	30.14R
50	333,381.66'	344,763.03'	ALUMINUM MONUMENT	58+54.68	0.02R
9	333,406.63'	344,793.03'	ALUMINUM CAP ON REBAR	58+79.07	30.17R
903	333,546.56'	344,701.49'	ALUMINUM CAP ON REBAR	60+32.01	41.77L

**LINE TABLE**

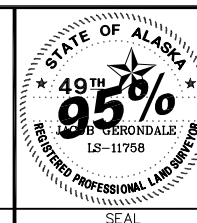
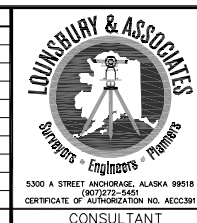
LINE NO.	Length	DIRECTION
L1	30.41'	N 00°07'08" E
L2	61.89'	N 89°54'53" E
L3	96.86'	N 89°52'52" E



SHEET 1 - STA: 49+50.00

SHEET 3 - STA: 59+29.77

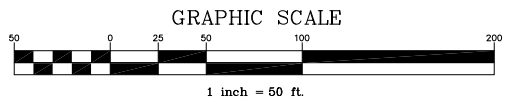
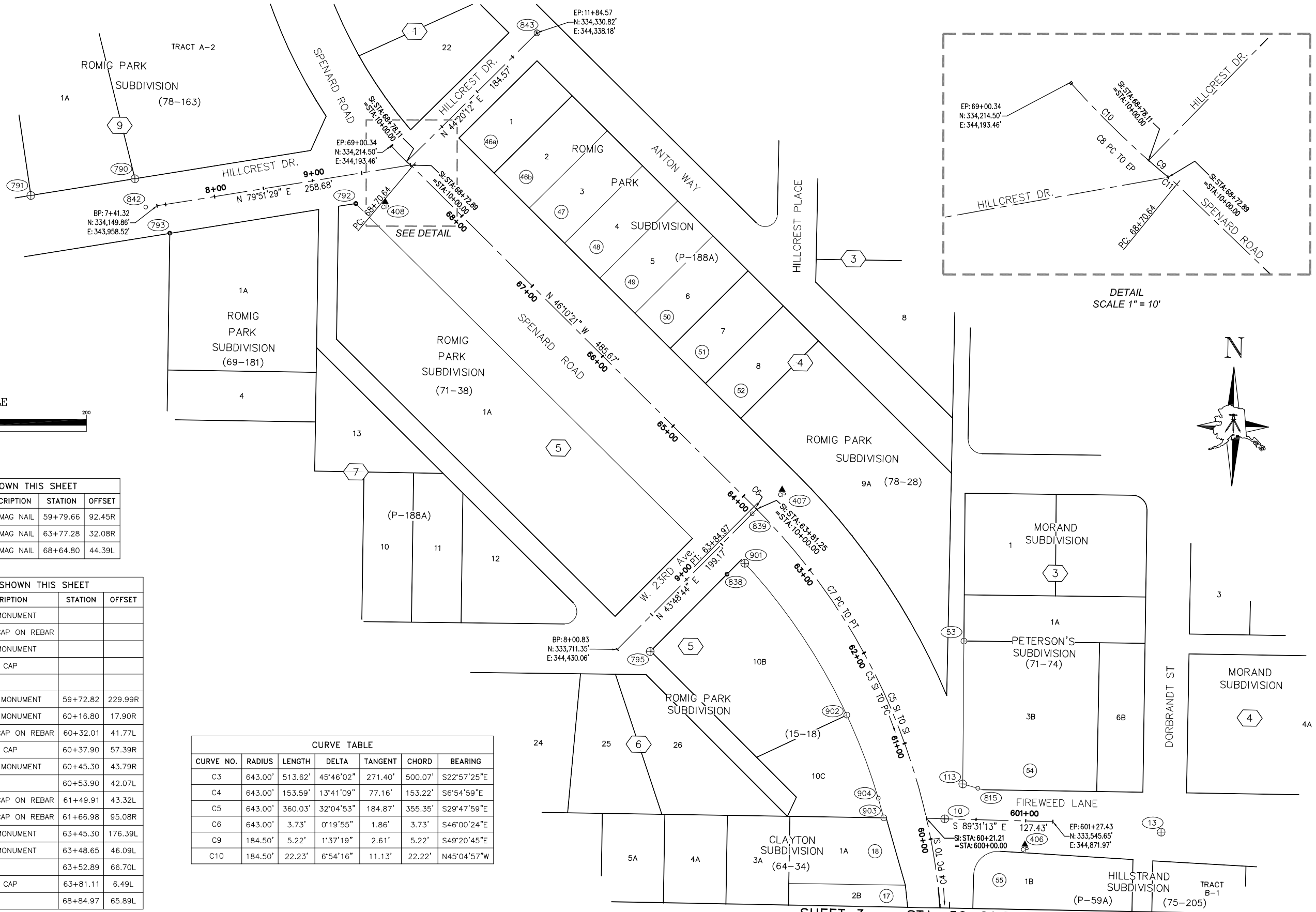
FIELD BOOKS	BM NO.	LOCATION	ELEV.	DATA	DRAWN BY	CHECKED BY	DATA	DRAWN BY	CHECKED BY	REV	DATE	DESCRIPTION	BY	REV	DATE	DESCRIPTION	BY
DESIGN: -	-	-	-	BASE	-	-	TELEPHONE	-	-	-	-	-	-	-	-	-	-
STAKING: -	-	-	-	TOPOGRAPHY	-	-	ELECTRIC	-	-	-	-	-	-	-	-	-	-
ASBUILT: -	-	-	-	PROFILE	-	-	CABLE TV	-	-	-	-	-	-	-	-	-	-
CONTRACTOR: -	-	-	-	SANITARY SEWER	-	-	DESIGN	-	-	-	-	-	-	-	-	-	-
INSPECTOR: -	-	-	-	STORM SEWER	-	-	QUANTITIES	-	-	-	-	-	-	-	-	-	-
				WATER	-	-	MUN. FINAL CHECK	-	-	-	-	-	-	-	-	-	-
				GAS	-	-		-	-	-	-	-	-	-	-	-	-



PROJECT MANAGEMENT AND ENGINEERING DEPARTMENT  
 PM&E PROJECT NO. 03-22B  
 SPENARD ROAD RECONSTRUCTION  
 BENSON BOULEVARD TO HILLCREST DRIVE  
**SURVEY CONTROL SHEET**  
 STA 49+50.00 TO 59+29.77  
 SCALE: H: 1" = 50'  
 DATE: DEC. 2016  
 GRIDS: 1529/1629  
 SHEET SC2 of SC3

**LEGEND**

- ⊕ FOUND ALUMINUM CAP
- FOUND IRON PIPE
- ⊕ FOUND MONUMENT
- FOUND REBAR
- ▲ SET MAG NAIL
- ① BLOCK NUMBER
- ⑥⑧ PARCEL NUMBER
- ⑩ CONTROL POINT NUMBER
- (02-051) PLAT NUMBER
- 2 LOT NUMBER
- SI STREET INTERSECTION
- PC POINT OF CURVATURE
- PT POINT OF CURVATURE
- PRC POINT OF REVERSE CURVE



**SET PROJECT CONTROL SHOWN THIS SHEET**

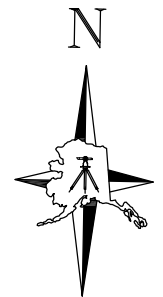
POINT NO.	NORTHING	EASTING	DESCRIPTION	STATION	OFFSET
406	333,522.20'	344,844.14'	SET MAG NAIL	59+79.66	92.45R
407	333,875.18'	344,593.27'	SET MAG NAIL	63+77.28	32.08R
408	334,157.91'	344,188.36'	SET MAG NAIL	68+64.80	44.39L

**FOUND PROJECT CONTROL SHOWN THIS SHEET**

POINT NO.	NORTHING	EASTING	DESCRIPTION	STATION	OFFSET
791	334,158.08'	343,831.21'	ALUMINUM MONUMENT		
843	334,330.82'	344,338.18'	ALUMINUM CAP ON REBAR		
790	334,176.63'	343,935.71'	ALUMINUM MONUMENT		
842	334,148.37'	343,947.18'	REBAR WITH CAP		
793	334,122.58'	343,971.91'	IRON PIPE		
13	333,537.06'	344,981.15'	BRASS CAP MONUMENT	59+72.82	229.99R
10	333,546.56'	344,762.99'	BRASS CAP MONUMENT	60+16.80	17.90R
903	333,546.56'	344,701.49'	ALUMINUM CAP ON REBAR	60+32.01	41.77L
815	333,577.96'	344,795.73'	REBAR WITH CAP	60+37.90	57.39R
113	333,581.99'	344,780.49'	BRASS CAP MONUMENT	60+45.30	43.79R
904	333,566.18'	344,695.66'	REBAR	60+53.90	42.07L
902	333,649.37'	344,662.47'	ALUMINUM CAP ON REBAR	61+49.91	43.32L
53	333,725.97'	344,779.10'	ALUMINUM CAP ON REBAR	61+66.98	95.08R
795	333,709.84'	344,463.25'	ALUMINUM MONUMENT	63+45.30	176.39L
901	333,800.38'	344,557.00'	ALUMINUM MONUMENT	63+48.65	46.09L
838	333,789.12'	344,539.31'	IRON PIPE	63+52.89	66.70L
839	333,850.32'	344,563.52'	REBAR WITH CAP	63+81.11	6.49L
792	334,155.73'	344,158.70'	IRON PIPE	68+84.97	65.89L

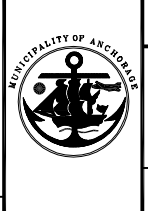
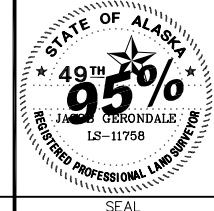
**CURVE TABLE**

CURVE NO.	RADIUS	LENGTH	DELTA	TANGENT	CHORD	BEARING
C3	643.00'	513.62'	45°46'02"	271.40'	500.07'	S22°57'25"E
C4	643.00'	153.59'	13°41'09"	77.16'	153.22'	S6°54'59"E
C5	643.00'	360.03'	32°04'53"	184.87'	355.35'	S29°47'59"E
C6	643.00'	3.73'	0°19'55"	1.86'	3.73'	S46°00'24"E
C9	184.50'	5.22'	1°37'19"	2.61'	5.22'	S49°20'45"E
C10	184.50'	22.23'	6°54'16"	11.13'	22.22'	N45°04'57"W



**SHEET 3 - STA: 59+29.77**

FIELD BOOKS	BM NO.	LOCATION	ELEV.	DATA	DRAWN BY	CHECKED BY	DATA	DRAWN BY	CHECKED BY	REV	DATE	DESCRIPTION	BY	REV	DATE	DESCRIPTION	BY	
DESIGN: MOA 3346, 3376-3379, 3406, 3690, 3691	GAAB 89	CENTER BOWL	93.40'	BASE	-	-	TELEPHONE	-	-	-	-	-	-	-	-	-	-	-
	GAAB 103	ENSTAR STAIRS	96.60'	TOPOGRAPHY	-	-	ELECTRIC	-	-	-	-	-	-	-	-	-	-	-
STAKING: -	CB TL-3A	REI BUILDING	96.09'	PROFILE	-	-	CABLE TV	-	-	-	-	-	-	-	-	-	-	-
ASBUILT: -	-	-	-	SANITARY SEWER	-	-	DESIGN	-	-	-	-	-	-	-	-	-	-	-
CONTRACTOR: -	-	-	-	STORM SEWER	-	-	QUANTITIES	-	-	-	-	-	-	-	-	-	-	-
INSPECTOR: -	-	-	-	WATER	-	-	MUN. FINAL CHECK	-	-	-	-	-	-	-	-	-	-	-
		BASIS OF DATUM: 1972 N.G.S. DATUM		GAS	-	-		-	-	-	-	-	-	-	-	-	-	-



PROJECT MANAGEMENT AND ENGINEERING DEPARTMENT  
PM&E PROJECT NO. 03-22B

SPENARD ROAD RECONSTRUCTION  
BENSON BOULEVARD TO HILLCREST DRIVE

**SURVEY CONTROL SHEET**  
STA 59+29.77 TO 69+00.34

SCALE: H: 1" = 50'  
DATE: DEC. 2016  
GRIDS: 1529/1629  
ACCT. NO. 05-037G

SHEET SC3 of SC3